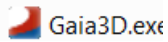


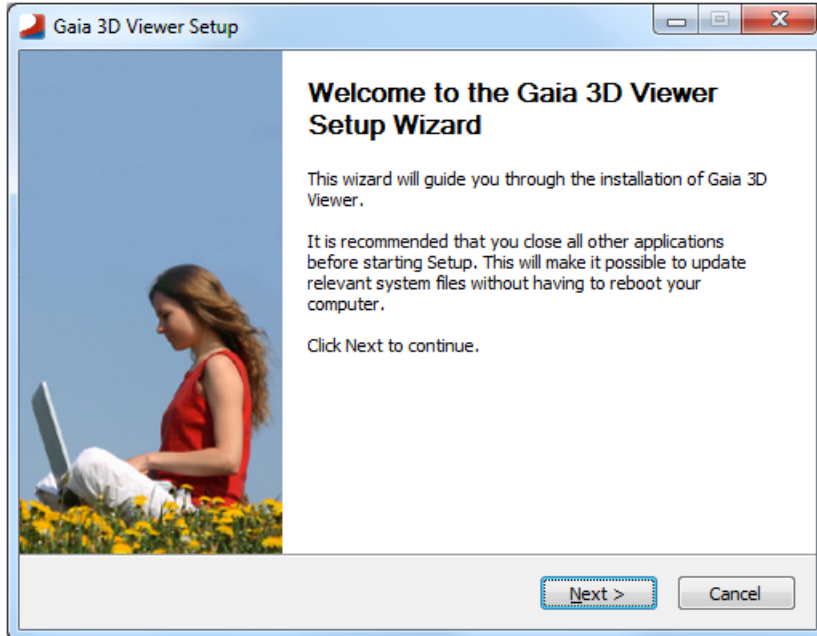
Gaia 3D Quick Start

Step 1 – Installation

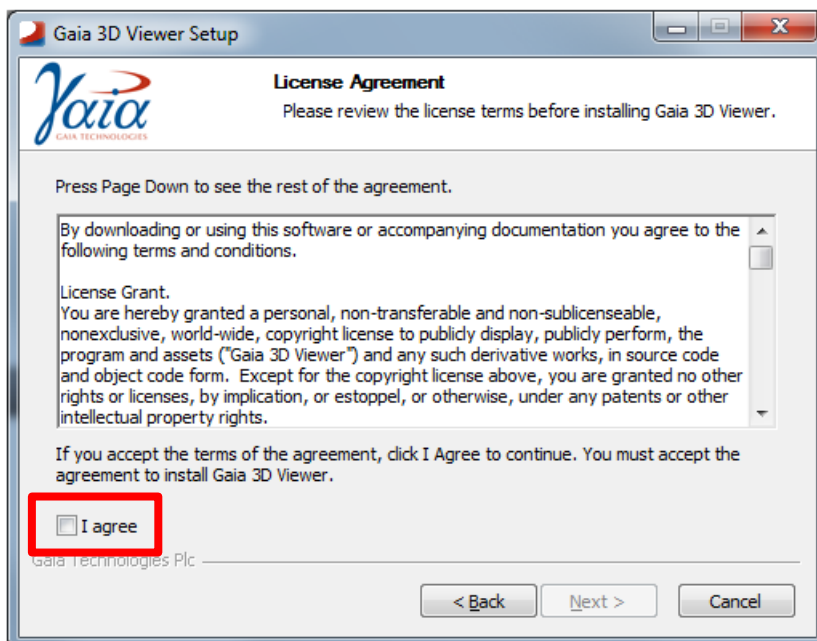
1. Run your installer (either from your DVD/USB stick if provided or from the download)



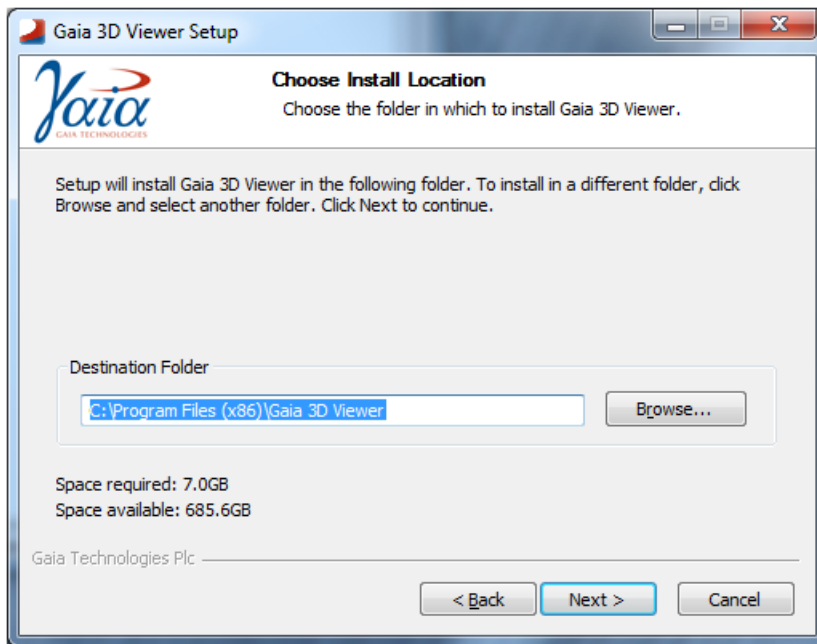
2. You are presented with the **Welcome** screen, Click **Next**.



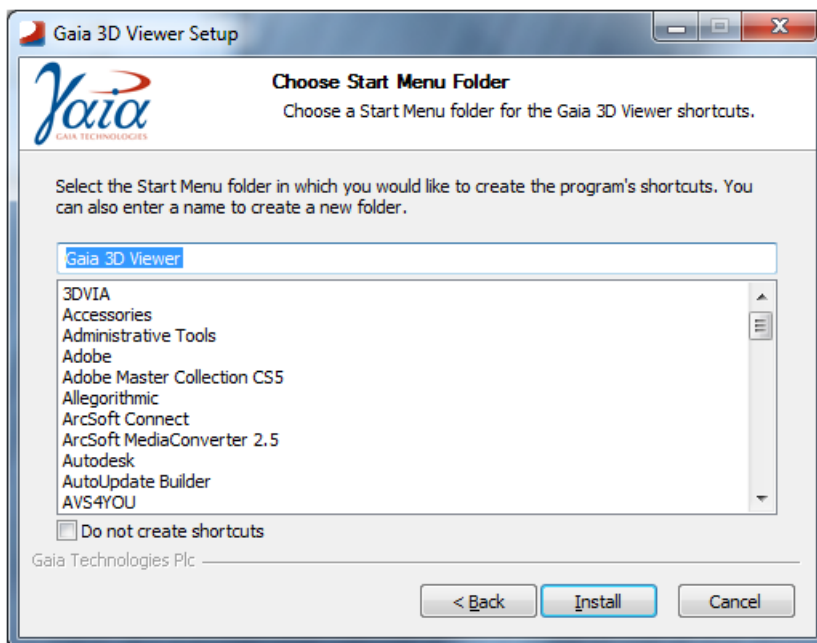
3. On the license screen, read and accept the agreement to continue.



4. Choose where you would like to install the software, or leave it as default (recommended).



5. Select the **Start Menu** folder in which you would like to create the program's shortcut.



6. Click **Install**.

DLP Projector Cables

Configuring a DLP Projector using a VGA cable.

The picture below illustrates how a typical **VGA cable** would connect from the PC to the Projector. The Quadro graphics card does not come with a VGA port, and will require a **DVI to VGA adaptor** . (*Usually supplied separately*)



It is possible to be able to view the content in 3D, without the use of a 3D graphics card. This will depend on the type of 3D projector you have available.

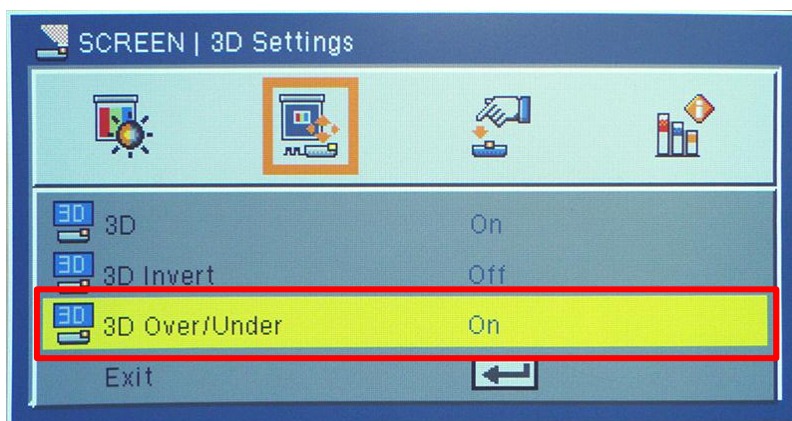
The majority of 3D enabled projectors have a functionality known as either top-bottom (vertical) or side-by-side (horizontal). If you are unsure whether this functionality is available for your projector, you can check the technical specifications or have a look at the menu on the projector.

Configuring for use without a 3D graphics card

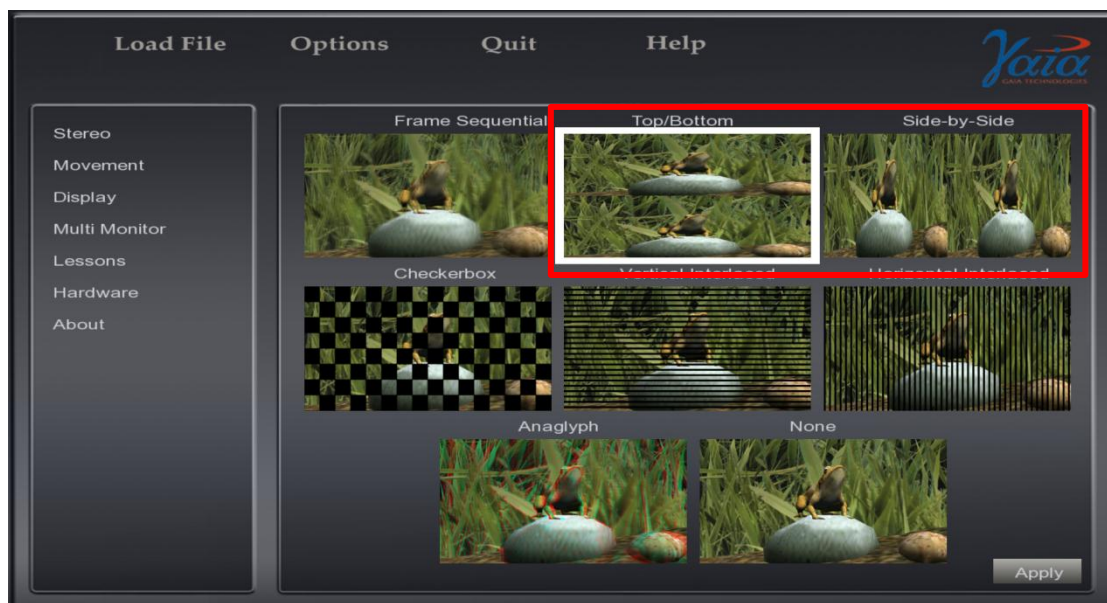
PC configuration

With the projector connected to the PC (either via VGA or HDMI connection), right click on the desktop and click on **Screen Resolution** ensure the projector screen resolution is on its native setting.

Access the projector menu (example below) and ensure that the top/bottom (in this case, the manufacturer has named it Over/Under) is selected. Please note that different projector manufacturers use different menu systems.



Launch the 3D software and select the **Options** menu. By default this will set to **Frame Sequential**. Change the option to either **Top/Bottom** or **Side-by-Side**. This will of course depend on whether type of projector used (as mentioned previously).



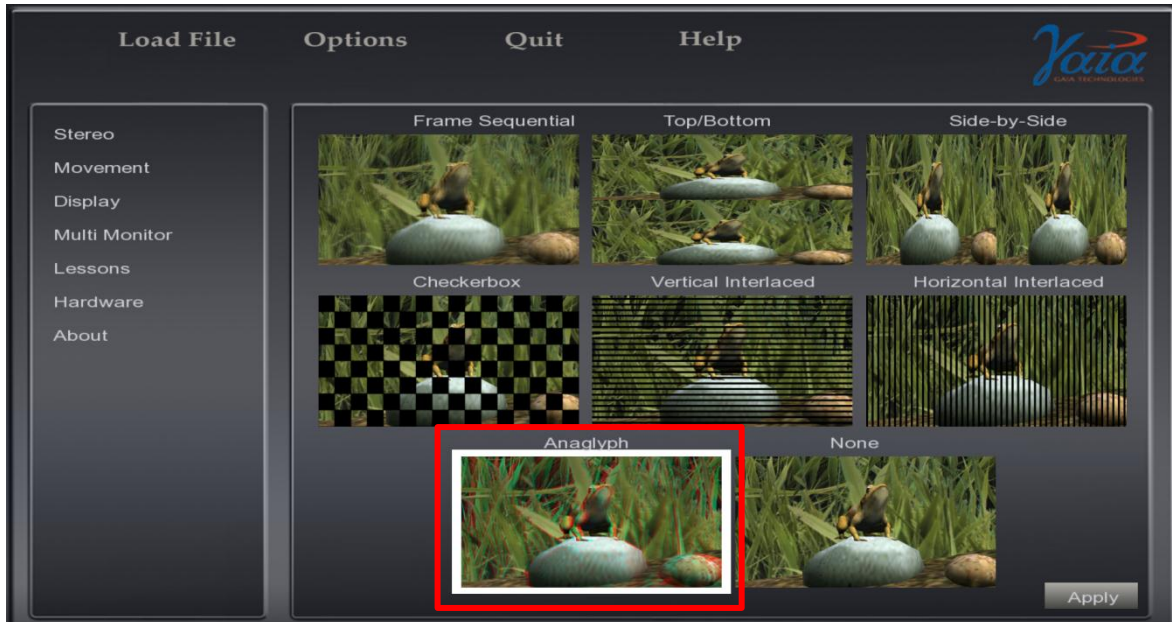
Click **Apply**. You will need to restart the software for it to take effect.

Anaglyph

Gaia 3D can also be used with anaglyph 3D. This is 3D that uses red and blue lensed glasses. Please note that there are other, different coloured lenses available for anaglyph but Gaia 3D uses red and blue.

Anaglyph does not require you to change any settings either on the projector or the PC, as it works purely from the coloured lenses.

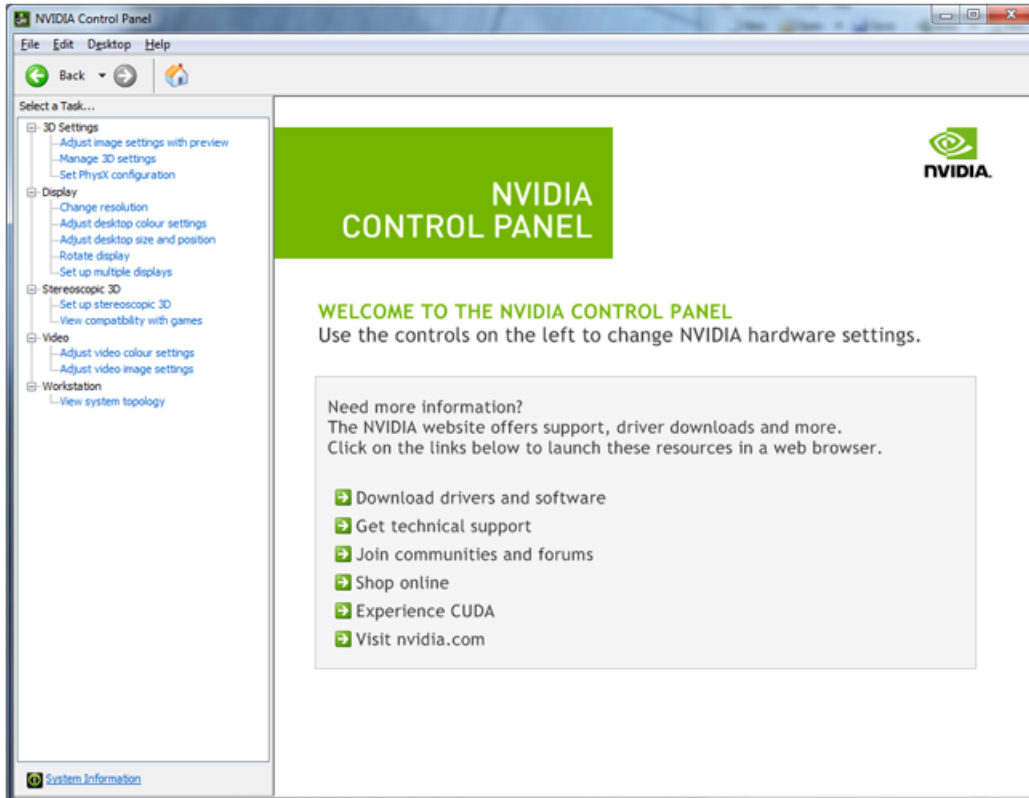
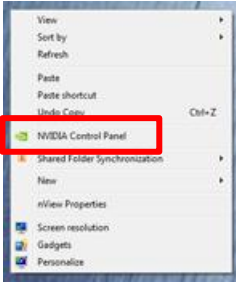
Launch the 3D software and select the **Options** menu. By default this will set to **Frame Sequential**. Change the option to **Anaglyph** and click **Apply**.



You will need to restart the software for it to take effect.

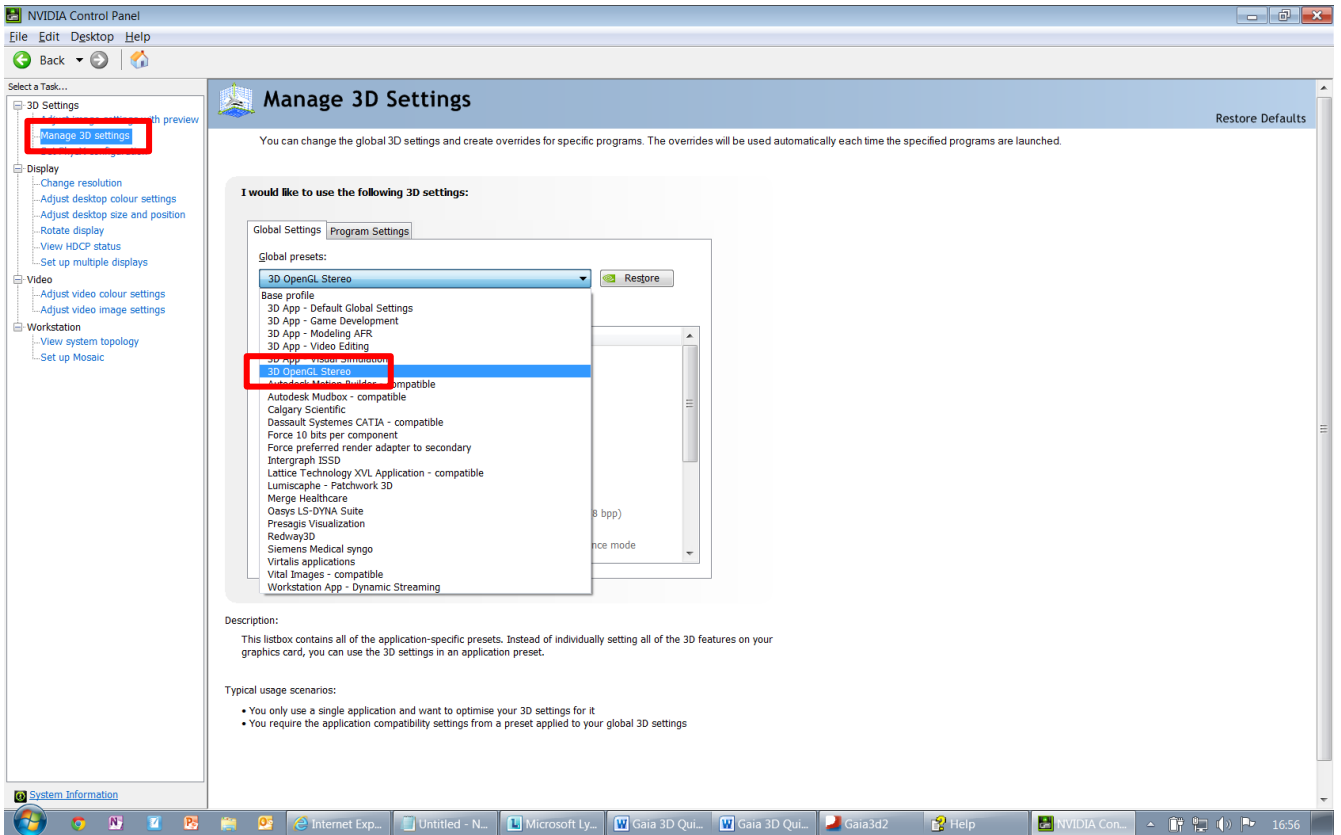
Accessing the NVIDIA Control Panel

1. Right click on the desktop and choose **NVIDIA Control Panel**.

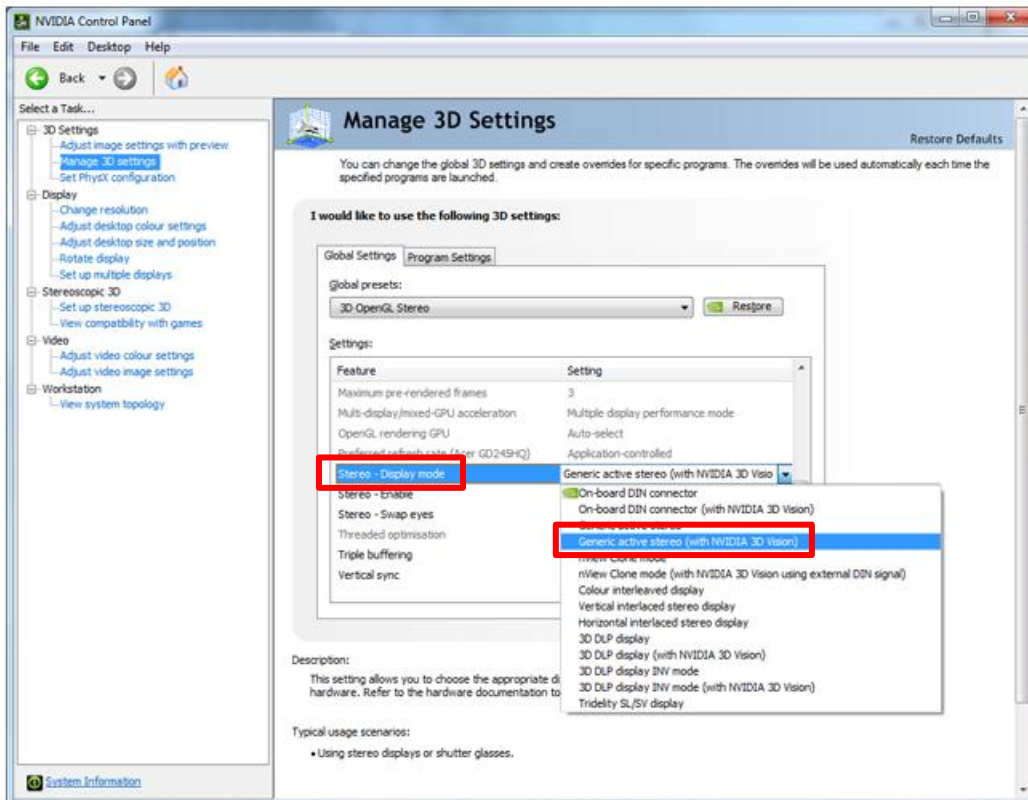


Configuring the PC for DLP 3D

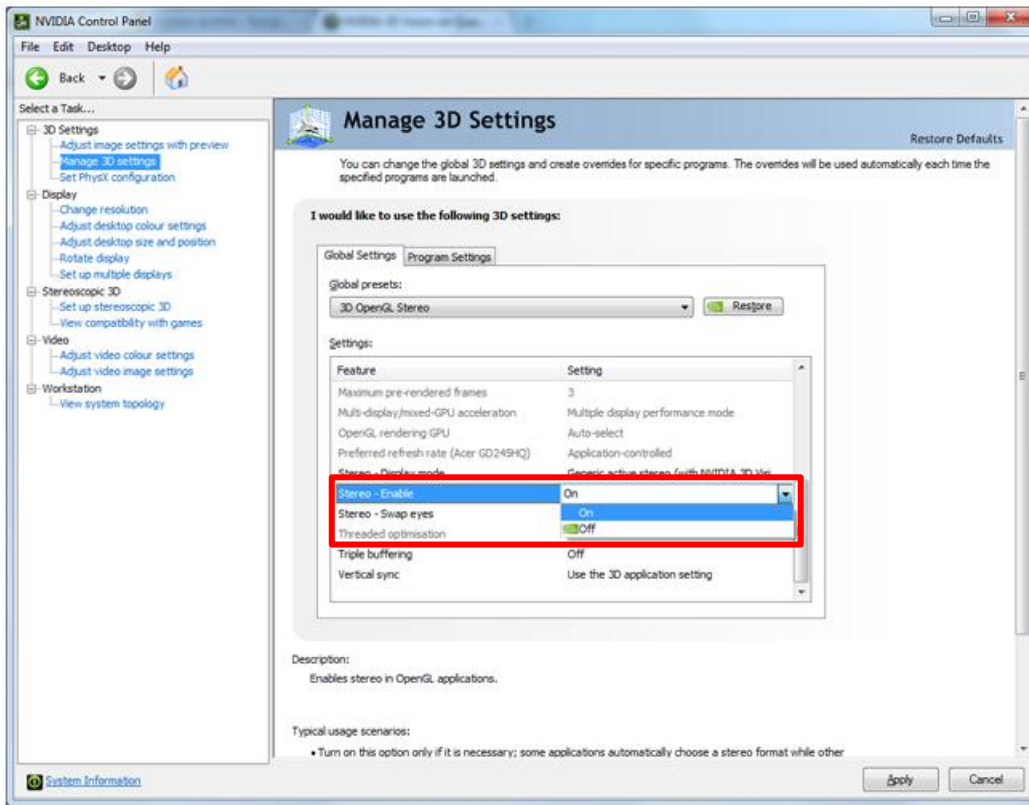
1. Open *the NVIDIA Control Panel* (refer to **Accessing the NVIDIA Control Panel** section).
2. Click on **Manage 3D**.
3. Enable the **OpenGL Stereo** display method in the **Manage 3D Settings** tab.



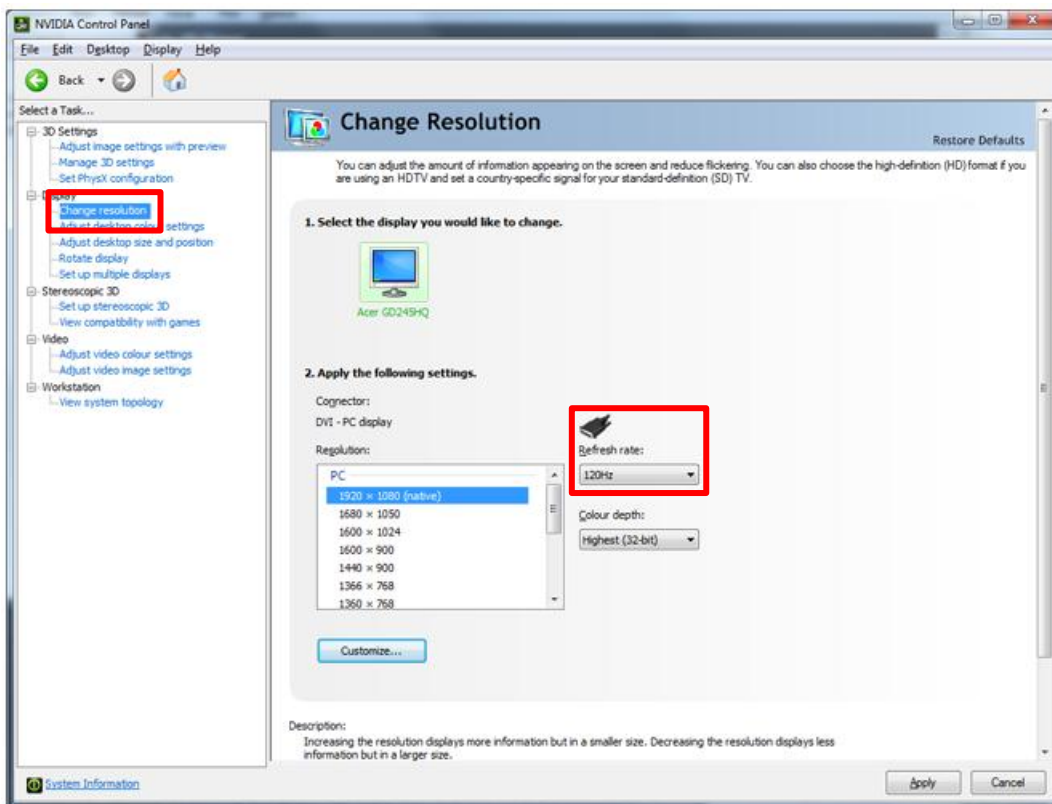
4. Choose **Generic active stereo** from the **Stereo – Display mode**.



5. Choose **Stereo – Enable** and click **On**.



6. Click on **Change resolution** and ensure that you are in the native resolution that your monitor or projector supports. Choose **120Hz** from the **Refresh rate** dropdown box, to enable 3D on the display.



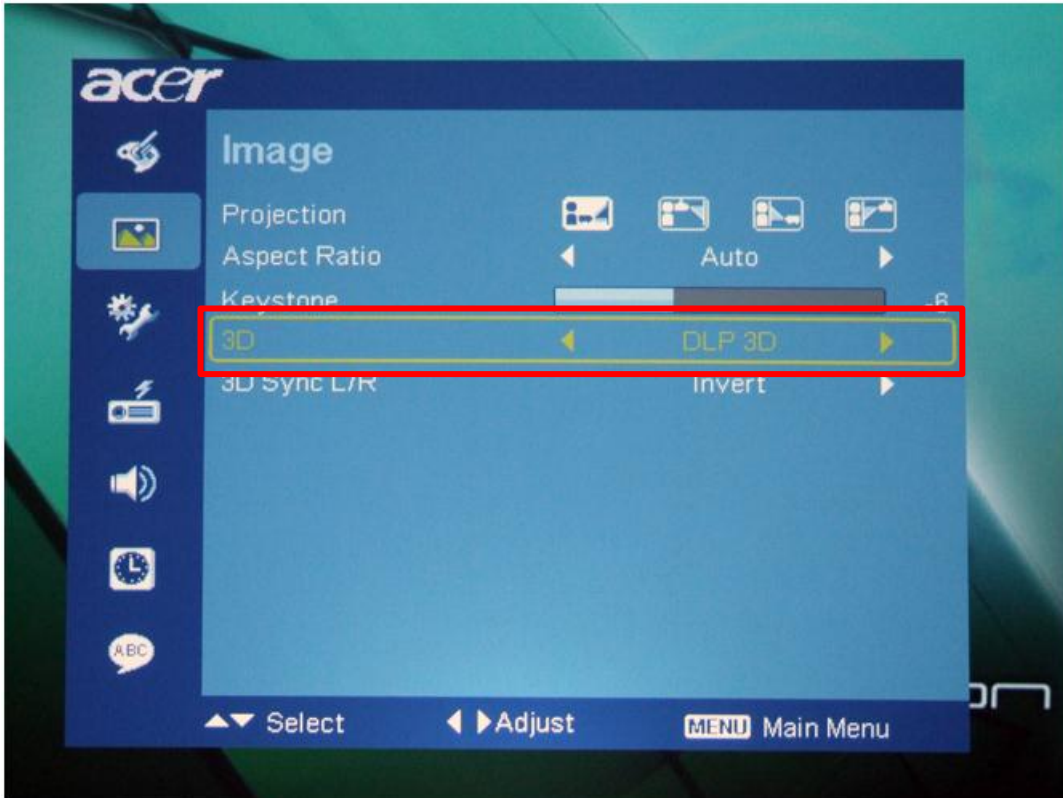
DLP 3D Configuration

Configuring the DLP Projector for 3D

Please refer to your projector manual on how to configure it for 3D. Generally you must enable 3D DLP in your projector's 3D menu as illustrated below.

Please note that most projectors, once the 3D is enabled, will then start up as 3D enabled each time. Some projectors however may have to be set to 3D DLP each time you turn the projector on as they default back to 2D when turned off.

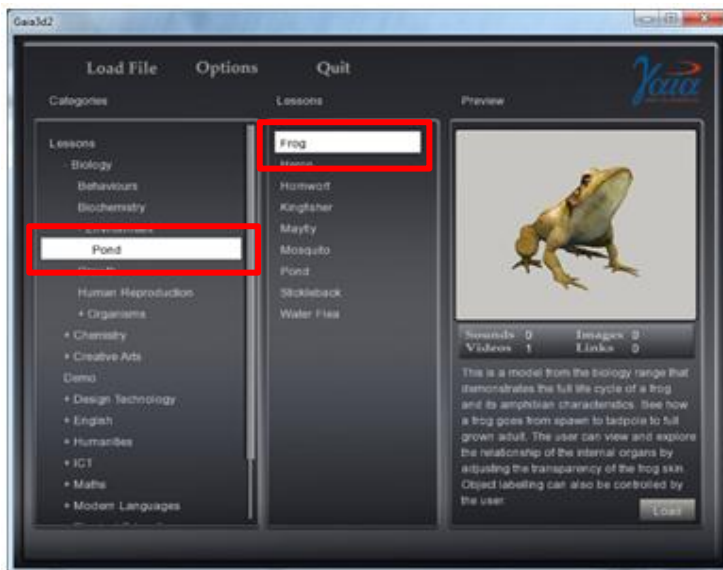
Please Note: 3D DLP mode will not appear on most projector menu's until the projector is receiving a 120Hz input from the PC.



Please Note: Some projectors have an alternative 3D setting, called NVIDIA 3D. You must ensure that the projector is set to 3D DLP.

Loading a Lesson

1. Load the **Gaia 3D Viewer** from the desktop or **Start Menu**.
2. Select a category.
3. Select a lesson
4. Click **Load** in the bottom right hand corner (or double click on the lesson).



Interacting with a Lesson

1. **Left Click** and drag to rotate around an object.
2. **Right Click** and drag to pan across an object.
3. Scroll up and down using the **mouse wheel** to zoom in and out.
4. It is possible to zoom without using the mouse wheel. Put the cursor on the area you want to zoom in to. Press and hold the **Shift** key and then click the **left** mouse button.

Menu Buttons



- **Main Menu (Esc)** - Click button or press [ESC] to return to the main menu.
- **Multimedia** - The full version of the Gaia 3D Viewer allows users to complement lessons with their own images and movies.
- **Swap Eyes (F11)** - Should the 3D image be inverted, this button will correct the image when clicked or [F11] button pressed.
- **Fill Window (F9)** - Maximize the screen view, press [F9] again to bring back the menu.
- **Reset All** - If the lesson requires resetting for any reason, this button will restore the scene to its original state.

Lesson Control Panel

Certain lessons contain a control panel in the bottom right of the screen.

The control panel contains any additional options for that lesson, such as showing labels or zooming to something.



Interacting with an Environment

Gaia 3D contains environments that can be navigated around.

It is possible to either use the mouse or the keyboard to navigate.



Mouse

- Press **left** and **right** mouse click together to move forward.
- Press **left** mouse click and move mouse to observe

Keyboard

